



Business Intelligence at Möhl

Möhl is starting into the future with a Talend DWH and Microsoft Power BI solution from HICO Group.

Tradition and digitalization: a prime example



Susanne Pollak
IT- Project Management,
MÖHL

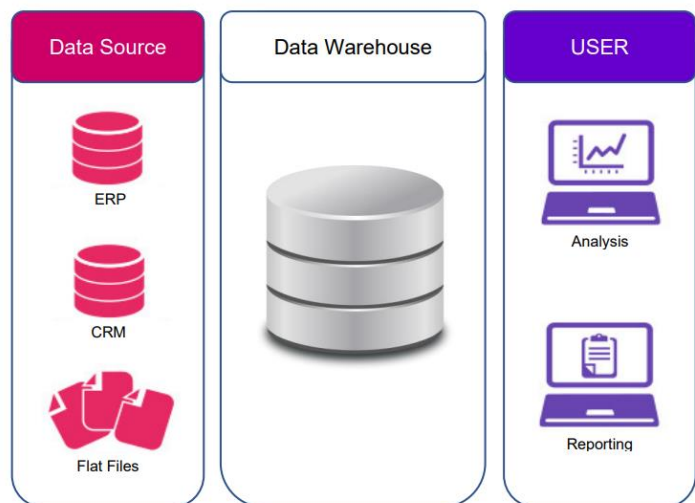
"The HICO Group came up with a thoroughly convincing concept. We are not a large corporation, but a medium-sized company. We need a DWH solution that is affordable on the one hand and powerful and future-proof on the other.

The BI solution that the HICO Group presented to us is a powerful combination of Talend, SQL-DWH and Power BI on the analysis side. This means that standard reports are available to the board of directors, management and field staff at all times, and the transaction data from the ERP and Excel is automatically transferred to the DWH, which is exactly what Möhl needs."

MÖHL goes Business Intelligence

Sustainability is a top priority at Möhl, a 125-year-old company with a long tradition. The Arbon-based company obtains two-thirds of its cider fruit from neighboring apple growers, while the rest of the approximately 25,000 tons per year comes from the surrounding area. In the fifth generation, the Möhl family is a juice craftsman - down-to-earth, honest, direct, and always open to new ideas.

And IT project manager Susanne Pollak also greatly appreciates this openness: "If, like me, you come from a large corporation with business intelligence applications for corporate management, the opportunities offered by family-owned companies like Möhl are enormous. Möhl was still at the very beginning of digitalization, key figures were processed with the help of Excel sheets, and so were the analyses. I knew I could make a difference here," laughs Susanne Pollak.



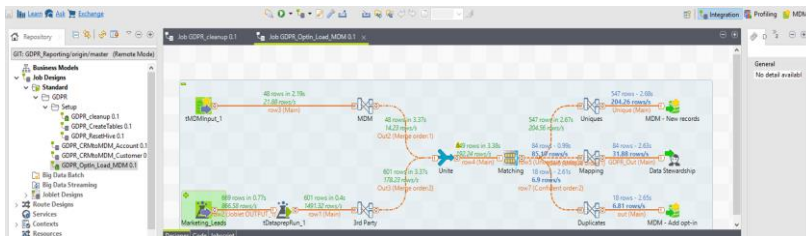
DWH-Architecture at MÖHL

Initial situation

Project manager Susanne Pollak was tasked with setting up a professional reporting environment at Möhl and had sent a request for proposals to HICO-Group for this purpose. "We had a Microsoft Dynamics ERP system at the start, into which the cash register data was read manually once a day. This was no longer state-of-the-art and also not future-proof. We wanted a DWH solution that could also work with the Excel dataset and a BI dashboard on the front end that could automatically throw out analytics, enabling higher quality decisions."

Concept phase: Talend as a data integration solution

Ben Gnädig, Head of Data & Cloud Consulting at HICO-Group, and his colleague Nina Heim, presented the possibilities of DWH architecture and reporting during the first visit and very quickly convinced with a stringent concept consisting of Talend Studio, which brought considerable budget advantages on the licensing side compared to other solutions.



Microsoft Power BI Dashboard

"Programming the KPI calculations in Power BI was not trivial," says Perparim Mjeku, Power BI expert at HICO Group. "We had offered the project at a very good price-performance ratio and had to scramble to finish on time." He laughs, "that's action made by HICO-Group!"



HICO-Group: Your BI-Experts

The BI experts and data management consultants of the HICO Group design, plan, implement and integrate 4th generation business intelligence solutions across industries and functions. The focus areas are planning, data & cloud and analytics, and the lead consultants in the three specialist areas are among the most experienced experts in the DACH region. In partnership with the market-leading software manufacturers JEDOX®, QLIK®, MICROSOFT POWER BI® and TALEND®, the internal value creation processes of the customers are significantly improved.



Ben Gnädig
Lead Consultant Data & Cloud
HICO-Group

"Talend is an outstandingly flexible data management platform that can integrate many different systems into one central data solution. For one of our customers, we were able to consolidate disparate ETL tools onto the Talend platform, which now does all the work.

We are talking about 70% time savings in data consolidation! Analysts and decision makers now benefit from this time.

And let's not forget the comprehensive scalability, the agile architecture, the flexibility and the extremely short implementation phase. It took Möhl only 15 days to get the system up and running, and we delivered on time and on budget. And with Power BI, Möhl now has a modern and powerful analytics tool in place."



Susanne Pollak
IT-Project Management,
MÖHL

"The cooperation with HICO-Group was highly gratifying in every respect. Ben Gnädig presented a great overall concept, Perparim Mjeku is an experienced BI expert who delivered on cost and on time. Clear recommendation."



Switzerland
HICO-Group
Hauptstraße 165
8272 Ermatingen

TRUECHART PTE. LTD.
Stampfenbachstrasse 57
CH-8006 Zürich

Germany
HICO-Group
Bahnhofstraße 19
78224 Singen

HICO-Group
Hardenbergstr. 9a
10623 Berlin

HICO-Group
Fritz-Vomfelde-Str. 34
40547 Düsseldorf

South Africa
HICO SA
29 9th Ave Edenburg
Sandton 2128

Singapur
TRUECHART Private Limited
8 Temasek Boulevard
#42-00 Suntec Tower Three